

# N3071 Network IR Dome Camera



## 2 Megapixel / H.264 / IR

- 2 Megapixel 1/3" CMOS Sensor in High Resolution
- H.264/MJPEG Dual Codec & Streaming simultaneously
- 3-Axis Mechanical Design for Ceiling Installation
- Up to UXGA (1600x1200@15fps) / WXGA (1280x720@30fps)
- Digital I/O for External Sensor and Alarm
- Mechanical ICR
- Built-in IR Illuminator
- 3D Noise Reduction
- 2 Way Audio Support
- 3GPP Support
- Micro SD Card Support
- IP68 Water and Vandal Proof
- PoE Power Over Ethernet IEEE802.3af (Option)

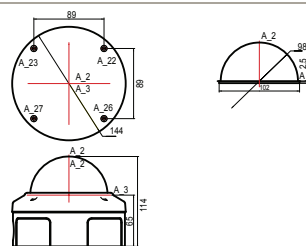


### Specifications

<b>Camera</b>		<b>Storage</b>	
Sensor	2 Mega Pixel 1/3" CMOS sensor	External	1x Micro SD card
Scan Method	Progressive	<b>Processors and Memory</b>	
Lens	Fixed Lens 4.3mm , F2.0	CPU	ARM9 SOC
Number of Effective Pixel (H*V)	1600 x1200	Flash and Memory	16MB ROM, 256MB DDRII RAM
Minimum Illumination	0.1 Lux (AT 30 IRE F1.4 Lens) / 0 Lux (IR on)	<b>I/O and Connectors</b>	
Dynamic Range	71db	LAN	1x RJ-45 Ethernet connector
SNR(max)	42.3db	Audio	11x Audio Microphone-in, 1x Audio Line-out
White Balance	Auto	Alarm I/O	1x Alarm-in (2pin), 1x Alarm-out (3pin)
Gain Control	High/Middle/Low, 3 steps selection	Serial Port	RS485 (2pin)
Flicker Control	Off/50 Hz/60 Hz, 3 steps selection	<b>Software</b>	
Backlight Compensation	On/Off	Browser	Internet Explorer 6.0 or above
Electronic Shutter	Auto/Slow Shutter (2X~16x / 5 steps selection)	Application Software	VMS Application Software
Panning Coverage	-174°~ 174°	OS supported	Microsoft Windows 2000, XP , Vista, Windows 7
Tilting Coverage	25°~ 90°	<b>Features</b>	
<b>IR Illuminators</b>		User Setting	
Wavelength Range	850nm	Date/ Time Setting	IP Filtering
Distance	Up to 15M	Video image control	Events
Day and Night	ICR (Auto control by photo sensor; Manual control by CGI) IR-Cut Filter Removable	Upload configuration	Triggered Actions
Lifetime	Up to 20,000 hours	Dynamic DNS	Blind Detection
<b>Video</b>		Motion Detection	Privacy Mask
Video Compression	H.264 BP and MJPEG Dual codec, dual streaming, Multiple profiles	<b>Open API</b>	
Video framerate	Dual Streaming (1280x720/30FPS + 640x352/30FPS) real time	CGI commands to control camera Media SDK to handle streaming	
Resolution	H.264: 1600x1200, 640x480/320x240/160x128 1280x720, 640x352/320x176/192x112 MJPEG: 1600x1200, 640x480/320x240 1280x720, 640x352/320x176	<b>Factory Default</b>	
Bitrate control	CBR and VBR, 128kbps ~ 4Mbps	Button	
Digital Zoom (PC side)	Yes, 1/2X, 2X, 4X	<b>Power</b>	
Image Rotation	Mirror, Flip, Rotate 180°	Power	DC 12V, DC12V/ POE, DC12V/AC24V (Option)
DNR	Yes	Power Consumption	5W
<b>Audio</b>		<b>Physical Properties</b>	
2 Way Audio	Audio microphone in, Audio Line-out	Dimensions	144.3mm(Φ) x 115mm(H)
Compression	AMR, G.711 @ 64kbps, G.726 @ 32kbps/ Configure bit rate	Weights	863g
<b>Network</b>		<b>Operating Environment</b>	
Streaming Protocols	RTSP/RTP/UDP,RTSP/RTP/TCP,RTSP/RTP/HTTP tunneling, LAN Multicast, Multipart-JPEG	Operating temperature	-20°C~ 50°C
Supported Protocols	IPv4, HTTP, UDP, TCP, ICMP, IGMP, ARP, DHCP, NTP, SMTP, FTP, SAMBA, UPnP, PPPoE, DNS, DDNS, RTSP, RTP, RTCP	Storage temperature	-30°C~ 60°C
3GPP Mobile Surveillance	Yes	Storage humidity	0% ~ 95% Non-condensing
		<b>Certification</b>	
		CE, FCC Class A, RoHS	
		<b>Warranty</b>	
		24 months	



### Dimension Diagram



### Distributed by:

### PocketNet Technology Inc.

7F., No.5, Lane 16, Sec. 2, Sichuan Rd. Banqiao City,  
Taipei County 22061, Taiwan (R.O.C.)  
Tel: +886.2.8967.2909  
Fax: +886.2.8967.2779